



Model Number: OX3-CI-TF-445T-4-RR-E-150

MFG PN: 12045

List Price:

All data shown at HIGH voltage setting

Format: STD 3 Phase

| Electrical Data | | | | General Data | | | |
|-------------------------------|-------------|---|--------------|------------------------------|------------|--------|--|
| Rated Motor Output Power | 150.0 | HP | | Frame Size | 445T | | |
| Rated Motor Speed | 1780 | r/min 60Hz | | Enclosure | TEFC | | |
| | 1480 | r/min 50Hz | | Mounting | Rigid | | |
| Rated Motor Voltage (3 Phase) | 460 | V/60Hz | | NEMA Design | C | | |
| | 380 | V/50Hz | | IP Rating | 55 | | |
| Rated Motor Current | 166.595569 | A (In) @ 60Hz | | Insulation Class | F | | |
| | 200 | A (In) @ 50Hz | | Tropicalization | 1 | | |
| FL Current @ 208V | None | A (In) @ 60Hz | | Duty | Cont. / S1 | | |
| Service Factor | 1.15 | @ 60Hz | | Cable Entry | 1-NPT 3" | | |
| | 1.15 | @ 50Hz | | Feet Removable | 0 | | |
| KVA Code | H | 60Hz | | Double Drilled | 1 | | |
| | D | 50Hz | | Frame Material | Cast Iron | | |
| Nominal Efficiency | 95.8 | % @ 60Hz | | Shaft Material | None | | |
| | 94.3 | % @ 50Hz | | Coating | RAL | 7024 | |
| Nominal Power Factor | 0.88 | cosθ @ 60Hz | | | | | |
| Full Load Torque Ft-Lb | S | | | Mechanical Data | | | |
| Load Data | Trq Ft-Lb | Trq %FL | Current Amps | Bearing DE Side | NU319 | | |
| Locked Rotor | | | | Bearing NDE Side | 6319C3 | | |
| Breakdown | 2005.324537 | 465.0 | - | Comp Ring (wavey washer) | DE | | |
| Pull Up | 983.2559022 | 228.0 | - | Weight | 1631.7 | Lbs | |
| Load Data | RPM | Eff % | Current Amps | Moment of Inertia | None | kg.m3 | |
| 125% of FL | 1787.9 | 95.39 | 214.06 | Site Conditions | | | |
| 75% of FL | 1792.3 | 95.48 | 146.37 | Temp Rise @ Full Load °C | B | @ 60Hz | |
| 50% of FL | 1794.9 | 94.76 | 109.21 | Ambient Temperature °C | 40 | | |
| No Load | 1199.0 | 0 | 65.07 | Altitude Above Sea Level (M) | 1000 | | |
| Brake Torque (N-M) | 100.0 | Loaded Torque Curves | | None | | | |
| Brake Coil Voltage | None | P1 = Output Power (KW), S = Slip (% of Sync RPM), η = Efficiency (%), cosφ = Power Factor | | | | | |

| | | |
|------------------------|-------------------|--|
| CT VFD Range | | |
| Haz Loc Rating | | |
| Options: | | |
| UL File Number | | |
| CSA File Number | | |
| DOE File Number | | |
| CE APPROVAL | | |
| Wiring Diagram | NEMA-3-6-D | |

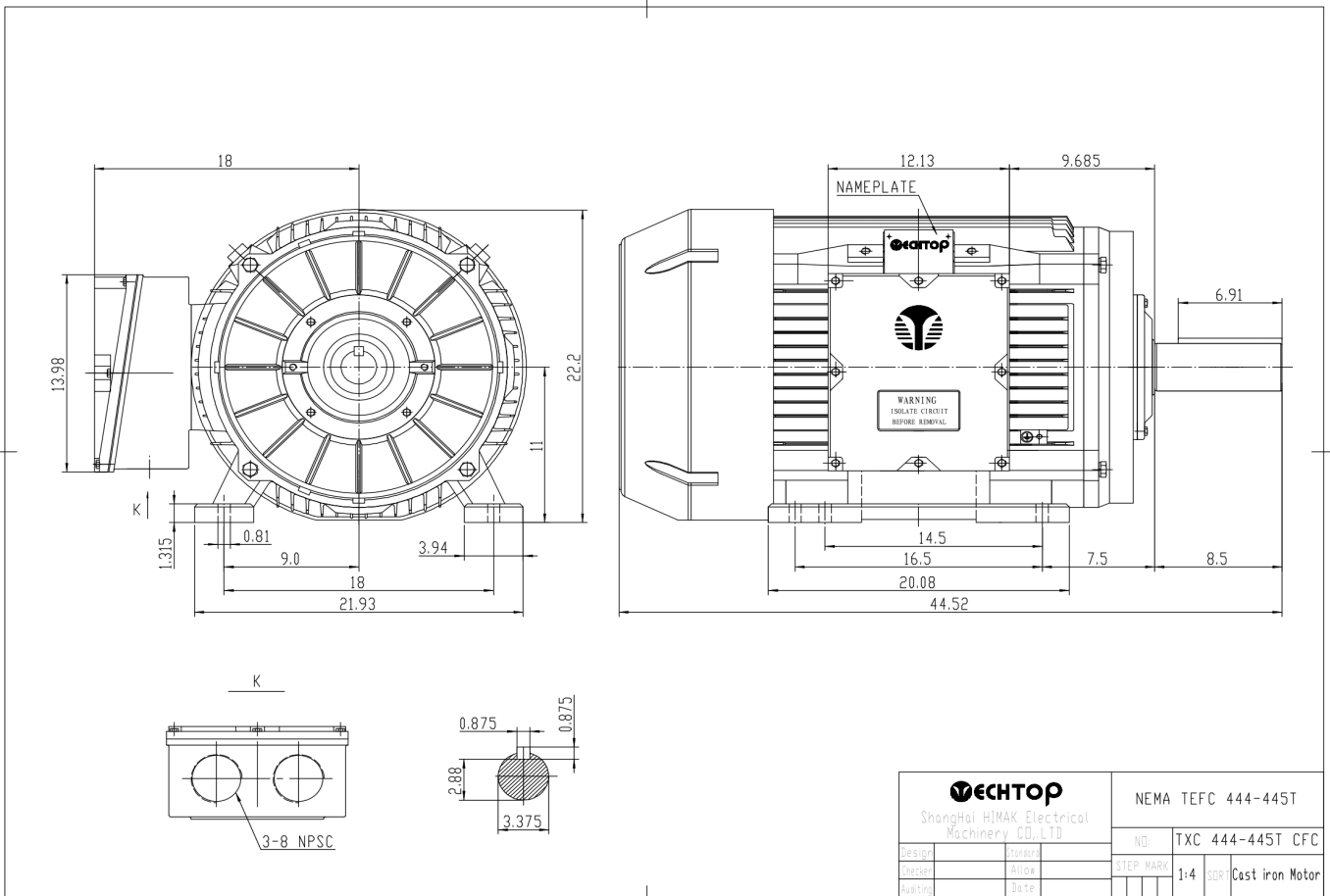
Techtop Industries -2815 Colonnades Court - Peachtree Corners, GA 30071 - Phone: (678) 436-5540



| | |
|----------------------|---------------------------|
| Model Number: | OX3-CI-TF-445T-4-RR-E-150 |
| MFG PN: | |
| List Price: | 12045 |

Dimensional Drawing (For Reference Only)

GR3-CI-TF-444(5)T-CFC-2D



| | | | |
|--|-------|--------------------|-------------------------|
| TECHTOP Shanghai HIMAK Electrical Machinery CO., LTD | | NEMA TEFC 444-445T | |
| Design | Drawn | NO | TXC 444-445T CFC |
| Checked | Allow | STEP MARK | 1:4 SDR Cast iron Motor |
| Approved | Date | | |

Components

| Item | Model | Description | List Price |
|--------------------------|-------|-------------|------------|
| C-Face Kit | | | |
| D-Flange Kit | | | |
| DE Endplate Kit | | | |
| NDE Endplate Kit | | | |
| Junction Box | | | |
| Cooling Fan Cover | | | |
| Cooling Fan | | | |
| Replacement Feet | | | |
| DE Bearing Retainer Kit | | | |
| NDE Bearing Retainer Kit | | | |

