



Model Number: GR3-CI-TF-324JM-2-BR-D-40

MFG PN: 4225

List Price:

All data shown at HIGH voltage setting

Format: STD 3 Phase

| Electrical Data | | | | General Data | | | |
|-------------------------------|-------------|-------------------|--|------------------------------|------------|--------|--|
| Rated Motor Output Power | 40.0 | HP | | Frame Size | 324JM | | |
| Rated Motor Speed | 3560 | r/min 60Hz | | Enclosure | TEFC | | |
| | 2940 | r/min 50Hz | | Mounting | Rigid | | |
| Rated Motor Voltage (3 Phase) | 230/460 | V/60Hz | | NEMA Design | A | | |
| | 190/380 | V/50Hz | | IP Rating | 55 | | |
| Rated Motor Current | 90.07/45.04 | A (In) @ 60Hz | | Insulation Class | F | | |
| | 112/56 | A (In) @ 50Hz | | Tropicalization | 1 | | |
| FL Current @ 208V | None | A (In) @ 60Hz | | Duty | Cont. / S1 | | |
| Service Factor | 1.25 | @ 60Hz | | Cable Entry | 1-NPT 2" | | |
| | 1.25 | @ 50Hz | | Feet Removable | 1 | | |
| KVA Code | H | 60Hz | | Double Drilled | 0 | | |
| | F | 50Hz | | Frame Material | Cast Iron | | |
| Nominal Efficiency | 92.4 | % @ 60Hz | | Shaft Material | None | | |
| | 90.0 | % @ 50Hz | | Coating | RAL | 7024 | |
| Nominal Power Factor | 0.89 | cos ϕ @ 60Hz | | | | | |
| Full Load Torque Ft-Lb | S | | | Mechanical Data | | | |
| Load Data | Trq Ft-Lb | Trq %FL | Current Amps | Bearing DE Side | 6312C3 | | |
| Locked Rotor | | | | Bearing NDE Side | 6312C3 | | |
| Breakdown | 140.8357223 | 236.0 | - | Comp Ring (wavy washer) | NDE | | |
| Pull Up | 74.59519187 | 125.0 | - | Weight | 485.1 | Lbs | |
| Load Data | RPM | Eff % | Current Amps | Moment of Inertia | None | kg.m3 | |
| 125% of FL | 3542.2 | 92.13 | 56.88 | Site Conditions | | | |
| 75% of FL | 3567.6 | 91.99 | 35.03 | Temp Rise @ Full Load °C | B | @ 60Hz | |
| 50% of FL | 3578.7 | 90.37 | 25.43 | Ambient Temperature °C | 40 | | |
| No Load | 1199.0 | 0 | 12.48 | Altitude Above Sea Level (M) | 1000 | | |
| Brake Torque (N-M) | 100.0 | | Loaded Torque Curves | | None | | |
| Brake Coil Voltage | None | | P1 = Output Power (KW), S = Slip (% of Sync RPM), η = Efficiency (%), cos ϕ = Power Factor | | | | |

| | | |
|------------------------|-----------------------|--|
| CT VFD Range | | |
| Haz Loc Rating | | |
| Options: | | |
| UL File Number | | |
| CSA File Number | | |
| DOE File Number | | |
| CE APPROVAL | | |
| Wiring Diagram | NEMA-3-12-DD-D | |

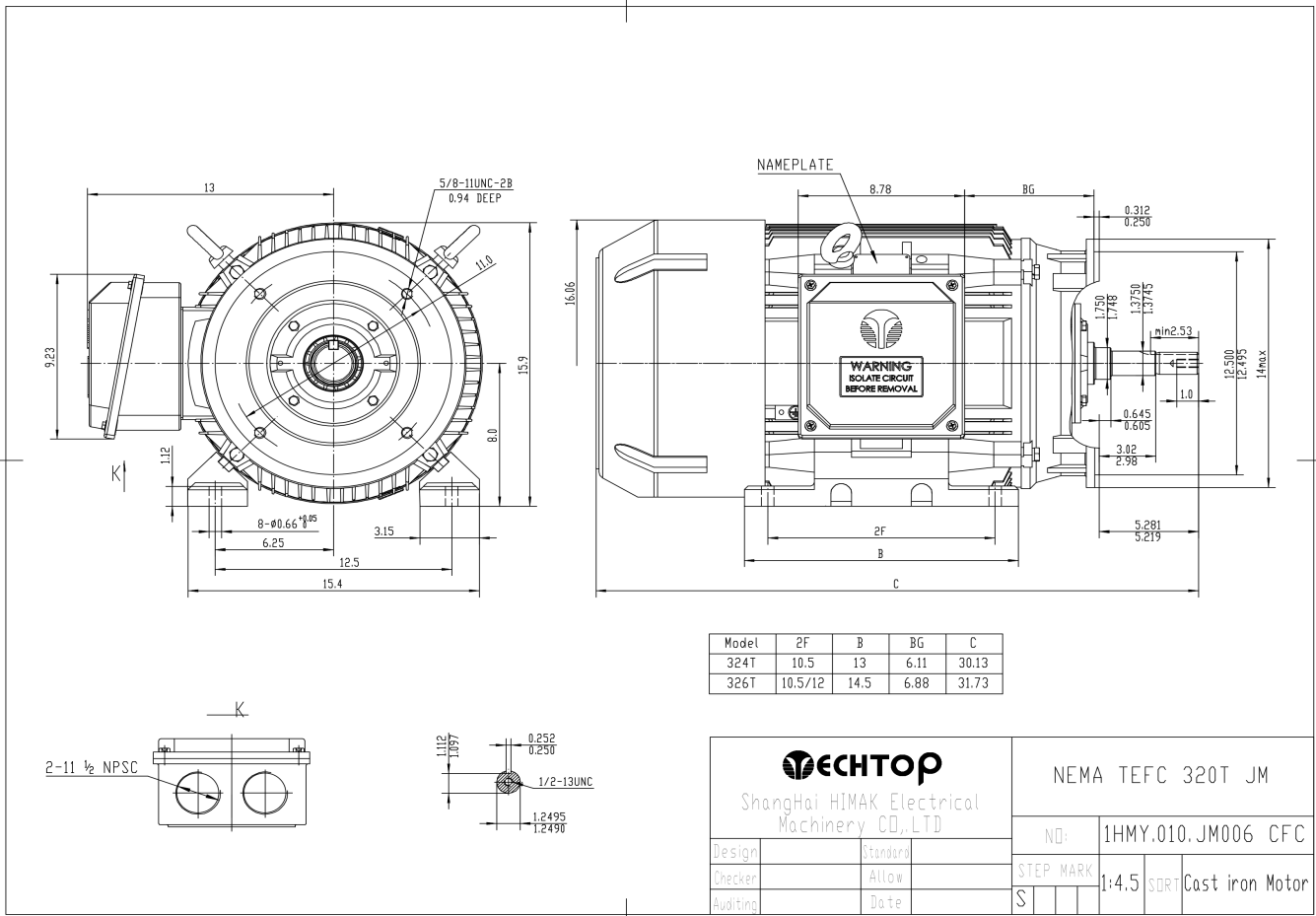
Techtop Industries -2815 Colonnades Court - Peachtree Corners, GA 30071 - Phone: (678) 436-5540



| | |
|----------------------|---------------------------|
| Model Number: | GR3-CI-TF-324JM-2-BR-D-40 |
| MFG PN: | |
| List Price: | 4225 |

Dimensional Drawing (For Reference Only)

GR3-CI-TF-324JM-CFC-2D



Components

| Item | Model | Description | List Price |
|--------------------------|-------|-------------|------------|
| C-Face Kit | | | |
| D-Flange Kit | | | |
| DE Endplate Kit | | | |
| NDE Endplate Kit | | | |
| Junction Box | | | |
| Cooling Fan Cover | | | |
| Cooling Fan | | | |
| Replacement Feet | | | |
| DE Bearing Retainer Kit | | | |
| NDE Bearing Retainer Kit | | | |

