



**Model Number:** GR3-CI-TF-284T-4-BR-D-25

**MFG PN:** 2352

**List Price:**

All data shown at HIGH voltage setting

Format: STD 3 Phase

| Electrical Data               |             |               |   | General Data                 |              |        |  |
|-------------------------------|-------------|---------------|---|------------------------------|--------------|--------|--|
| Rated Motor Output Power      | 25.0        | HP            |   | Frame Size                   | 284T         |        |  |
| Rated Motor Speed             | 1770        | r/min 60Hz    |   | Enclosure                    | TEFC         |        |  |
|                               | 1460        | r/min 50Hz    |   | Mounting                     | Rigid        |        |  |
| Rated Motor Voltage (3 Phase) | 230/460     | V/60Hz        |   | NEMA Design                  | A            |        |  |
|                               | 190/380     | V/50Hz        |   | IP Rating                    | 55           |        |  |
| Rated Motor Current           | 58.84/29.42 | A (In) @ 60Hz |   | Insulation Class             | F            |        |  |
|                               | 70.4/35.2   | A (In) @ 50Hz |   | Tropicalization              | 1            |        |  |
| FL Current @ 208V             | None        | A (In) @ 60Hz |   | Duty                         | Cont. / S1   |        |  |
| Service Factor                | 1.25        | @ 60Hz        |   | Cable Entry                  | 1-NPT 1-1/2" |        |  |
|                               | 1.25        | @ 50Hz        |   | Feet Removable               | 1            |        |  |
| KVA Code                      | K           | 60Hz          |   | Double Drilled               | 0            |        |  |
|                               | F           | 50Hz          |   | Frame Material               | Cast Iron    |        |  |
| Nominal Efficiency            | 93.6        | % @ 60Hz      |   | Shaft Material               | None         |        |  |
|                               | 90.5        | % @ 50Hz      |   | Coating                      | RAL          | 7024   |  |
| Nominal Power Factor          | 0.85        | cosθ @ 60Hz   |   |                              |              |        |  |
| Full Load Torque Ft-Lb        | S           |               |   | Mechanical Data              |              |        |  |
| Load Data                     | Trq Ft-Lb   | Trq %FL       | Current Amps  | Bearing DE Side              | 6311C3       |        |  |
| Locked Rotor                  |             |               |   | Bearing NDE Side             | 6311C3       |        |  |
| Breakdown                     | 259.1793393 | 350.0         | -   | Comp Ring (wavey washer)     | DE           |        |  |
| Pull Up                       | 152.545554  | 206.0         | -   | Weight                       | 366.03       | Lbs    |  |
| Load Data                     | RPM         | Eff %         | Current Amps  | Moment of Inertia            | None         | kg.m3  |  |
| 125% of FL                    | 1769.2      | 92.77         | 35.08   | Site Conditions              |              |        |  |
| 75% of FL                     | 1782.5      | 92.84         | 22.92   | Temp Rise @ Full Load °C     | B            | @ 60Hz |  |
| 50% of FL                     | 1788.3      | 91.59         | 17.43   | Ambient Temperature °C       | 40           |        |  |
| No Load                       | 1199.0      | 0             | 11.63   | Altitude Above Sea Level (M) | 1000         |        |  |
| Brake Torque (N-M)            | 100.0       |               | Loaded Torque Curves  |                              | None         |        |  |
| Brake Coil Voltage            | None        |               | P1 = Output Power (KW), S = Slip (% of Sync RPM), η = Efficiency (%), cosφ = Power Factor |                              |              |        |  |

|                        |                       |  |
|------------------------|-----------------------|--|
| <b>CT VFD Range</b>    |                       |  |
| Haz Loc Rating         |                       |  |
| Options:               |                       |  |
| <b>UL File Number</b>  |                       |  |
| <b>CSA File Number</b> |                       |  |
| <b>DOE File Number</b> |                       |  |
| <b>CE APPROVAL</b>     |                       |  |
| <b>Wiring Diagram</b>  | <b>NEMA-3-12-DD-D</b> |  |

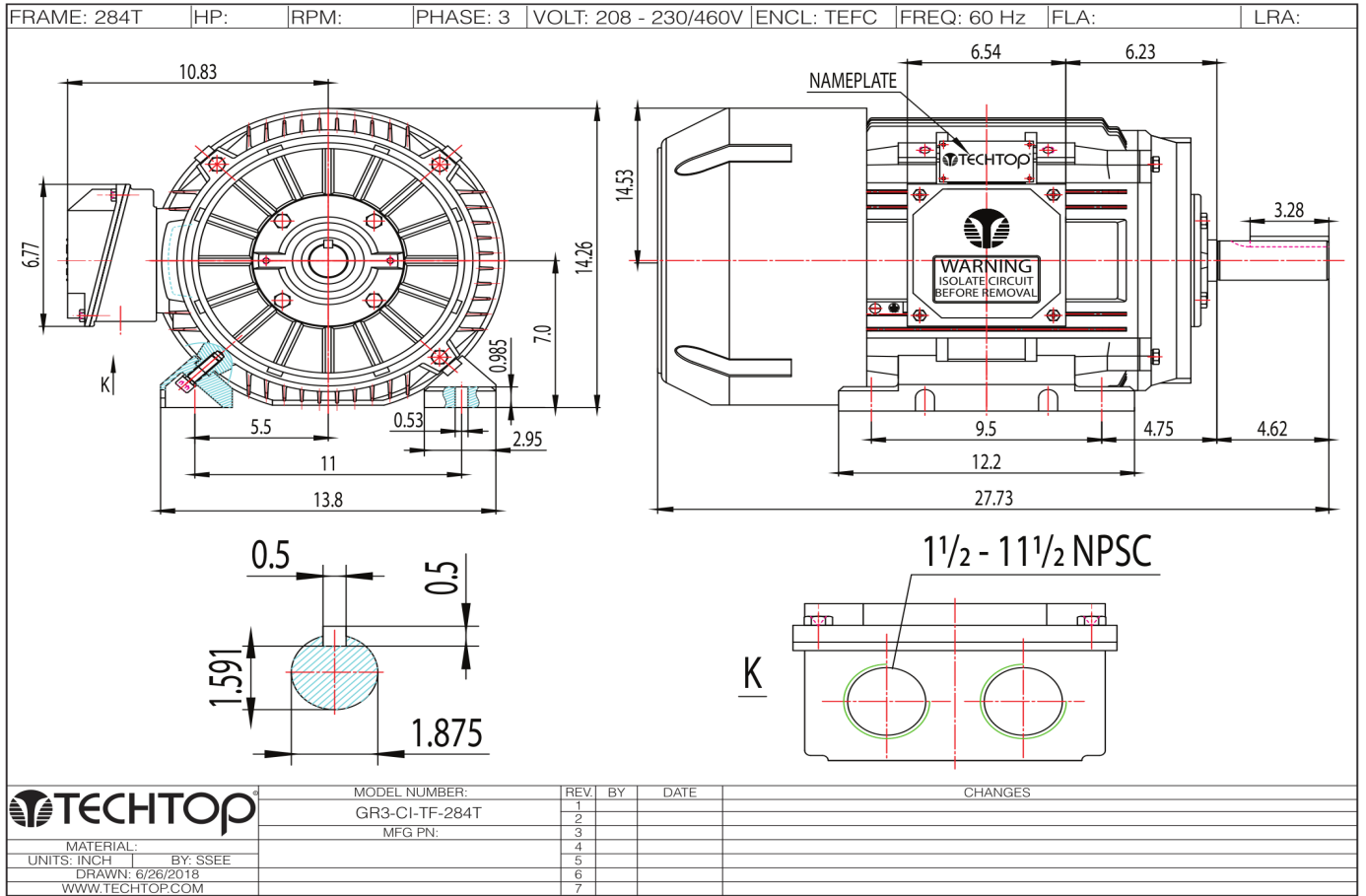
Techtop Industries -2815 Colonnades Court - Peachtree Corners, GA 30071 - Phone: (678) 436-5540



|                      |                          |
|----------------------|--------------------------|
| <b>Model Number:</b> | GR3-CI-TF-284T-4-BR-D-25 |
| <b>MFG PN:</b>       |                          |
| <b>List Price:</b>   | 2352                     |

Dimensional Drawing (For Reference Only)

GR3-CI-TF-284T-CFC-2D



**Components**

| Item                     | Model | Description | List Price |
|--------------------------|-------|-------------|------------|
| C-Face Kit               |       |             |            |
| D-Flange Kit             |       |             |            |
| DE Endplate Kit          |       |             |            |
| NDE Endplate Kit         |       |             |            |
| Junction Box             |       |             |            |
| Cooling Fan Cover        |       |             |            |
| Cooling Fan              |       |             |            |
| Replacement Feet         |       |             |            |
| DE Bearing Retainer Kit  |       |             |            |
| NDE Bearing Retainer Kit |       |             |            |

